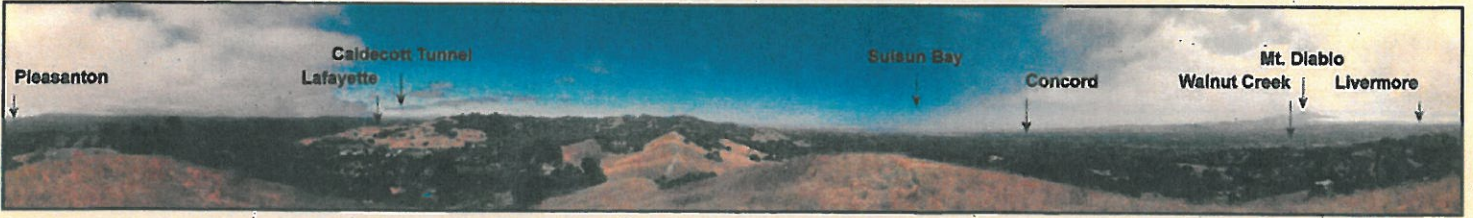


Walnut Creek Open Space Foundation



360° panorama with landmarks

MORE ON THE ACALANES RIDGE ACQUISITION

The story so far . . .

We've had our eye on the Acalanes Ridge property for 30 years because of its spectacular 360° views and its value as a wildlife corridor. It is also visible from most of central county – if it was developed, we would lose our backdrop of green hills. In 2004, we began to build a coalition to acquire this property. With the passage of the Regional Park Bond Measure WW in 2008 the goal was within our reach. In 2010 Muir Heritage Land Trust negotiated an option to buy the land. Now we have to raise the money to pay for it.

Will there be a happy ending?

This is where you come in. If you believe this land is worth preserving and you want the satisfaction of helping to make it happen, please contribute as generously as you can. (There's a form on the back page.) Together we can do it!

More views of the property

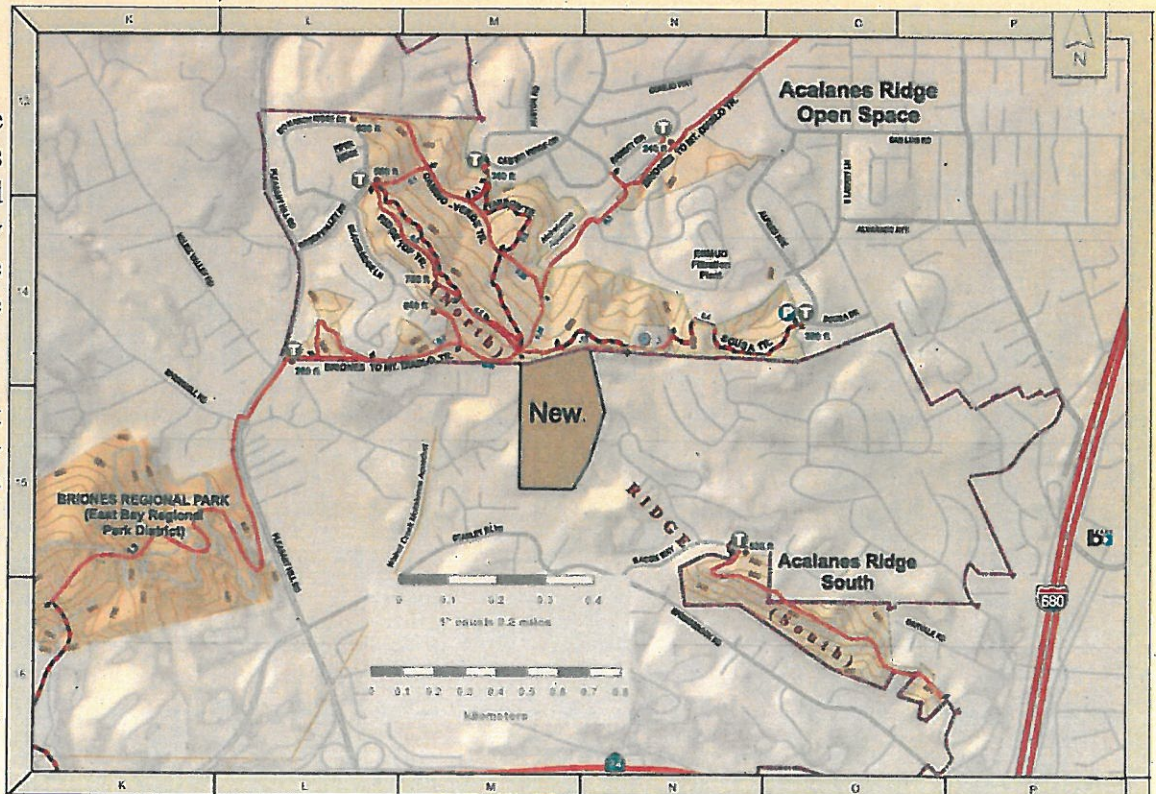
Last time we published photos of the Acalanes Ridge property and some of its treasures. In this issue, we bring you photos from the top. The view extends from Solano County to the hills south of Livermore and the Oakland hills in the west.

(See page 2.)

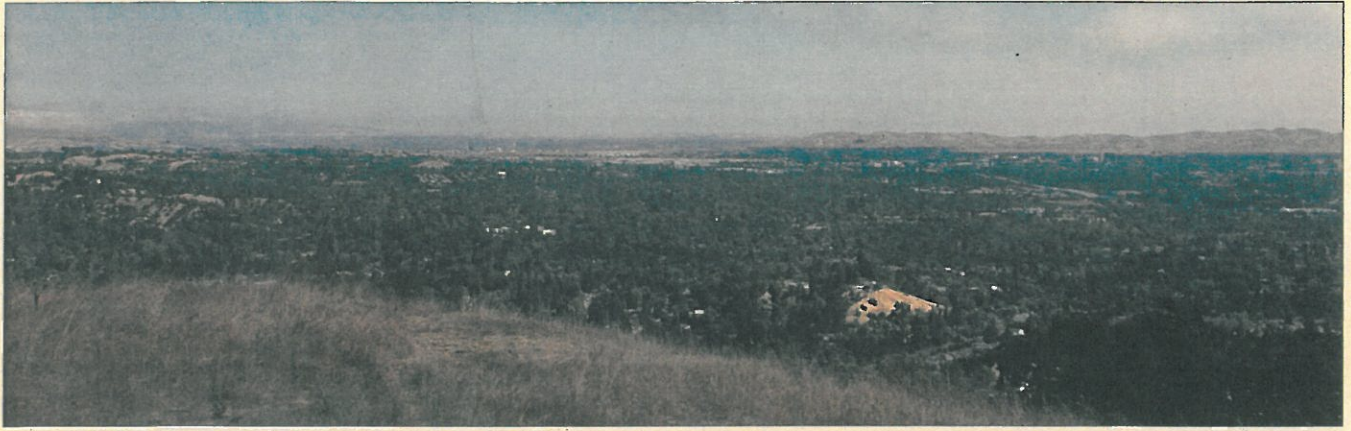
The website has more photos and panoramas you can scroll around to examine the view in detail. Look for the links on the home page.

The map at the right shows how the new parcel relates to other open space in the area.

The new property will close half the gap between the two pieces of the Acalanes Open Space.



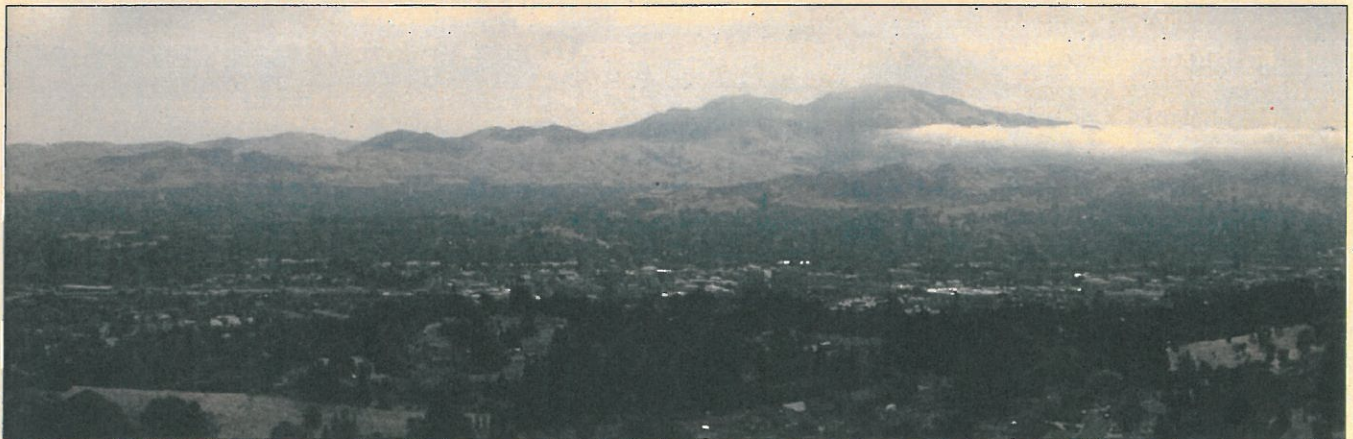
VIEWS FROM ACALANES RIDGE



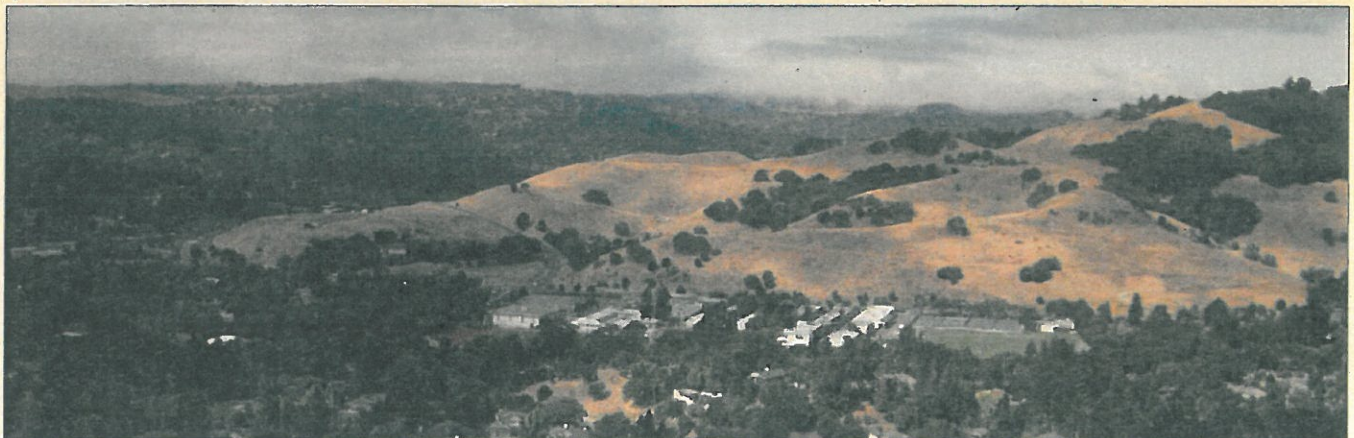
Looking North to Suisun Bay



Looking South Along the I-680 Corridor



Looking East to Mount Diablo



Looking West Across Lafayette to the Oakland Hills

Jerry Fritzke, In Memoriam

Advisory board member Jerry Fritzke passed away on July 23. I knew Jerry from the wildflower and geology walks he led and the wildflower lists he placed at open space entrances before he joined our board years ago. He got me started locating and identifying wildflowers in our open space. Jerry seemed to get a lot out of life and he had a wide range of interests. He shared his knowledge and interests freely and was a wonderful resource for residents who wanted to learn more about our open space. He wrote many authoritative articles for the Foundation's web site and contributed many beautiful pictures of flowers, rocks and trees. Jerry was a good companion, a good worker, a good teller of stories and a good board member. We will all miss him. Our sympathy goes to Jerry's wife Irene and to their children.

Bill Hunt, President



Jerry hiking Shell Ridge to photograph and catalog wildflowers



At the 30th anniversary of the Open Space



Participating in one of many membership mailing parties

Open Space Manager's Report

As a result of citizen input received through a series of public meetings and the experience of the Walnut Creek Open Space Division over a period of years it was decided last year that cattle grazing would be discontinued in the two smaller Open Space parcels of Sugarloaf and Acalanes Ridge. The contracted grazing season runs from November through October each year and all cattle should be removed from each site by the end of that month. Each of these sites has offered fewer than 175 acres for grazing. The two larger Open Space sites of Shell Ridge and Lime Ridge will continue to be grazed. In our efforts to ensure that any potential fire threats are mitigated, visitors to Acalanes and Sugarloaf will find increased discing and mowing activity around the boundaries and interior of these locations each Spring.

The Open Space is actually a very large and diverse living organism. We realize that any actions we take can potentially have both short and long term consequences. Part of our responsibility is a commitment that we never stop monitoring the condition of the natural environment and we remain ready to take what steps are needed to protect that environment and the visitors to our Open Space lands. Following the removal of cattle at the affected locations staff may remove some portions of fencing no longer needed and secure water supplies previously used by the cattle. In partnership with our friends on the Open Space Foundation Board, Open Space staff will watch for changes that occur with plant life in these areas and formulate next steps in protection of valuable species and removal of invasive plants.

Dan Cather, Open Space Manager



A lone steer munching on new growth in early spring - Acalanes Open Space



Tomcat Clover - Acalanes Open Space



Buttercup - Acalanes Open Space

Walnut Creek Open Space Foundation
PO Box 309
Walnut Creek, CA 94597-0309

Nonprofit Org.
U.S. Postage
PAID
Walnut Creek, CA
Permit No. 981

PRESERVE
ACALANES
RIDGE

Return Service
Requested

9459636029 C035



YES, I'LL HELP PRESERVE ACALANES RIDGE!

Name _____

I will contribute*

_____ \$5000

Address _____

_____ \$1000

City/Zip _____

_____ \$500

Phone _____

_____ \$250

_____ \$100

_____ \$50

_____ Other _____

Email _____

I will pledge \$ _____

by _____

(we never share)

(date)

Please make your check payable to the Walnut Creek Open Space Foundation or WCOSF, P.O. Box 309, Walnut Creek, CA 94597. All contributions are tax deductible to the full extent of the law.

* If you contribute \$5000 or more, your name will be placed on a plaque on the property. For \$500 or more, you will receive permanent recognition on our website. All donors will receive one-time recognition in our newsletter. If you prefer to remain anonymous, please let us know. To discuss special arrangements for a pledge, please call 937-6791.



Please note:

This issue of the WCOSF newsletter has been printed on 100% recycled paper.